

TASK 1

LISTENING(10 x 1 = 10 points)

Read the following sentences then listen to the recording and complete each space with **one** missing word. You will hear the text twice. Write your answers in the table below.

1. People can create viruses which can _____ from computer to computer.
2. The word *virus* was first used by a computer _____ Frederick Cohen.
3. The first computer virus to move from PC to PC was called _____.
4. Basit and AmjadAlvi created the virus to find out how many people were stealing their _____.
5. The virus didn't do any damage and was easy to _____.
6. Melissa and *Love Bug* viruses caused enormous problems for computer _____.
7. *Sasser Worm* virus affected banks, airlines, _____ and government buildings worldwide.
8. *Sasser Worm* virus didn't need to move via _____ unlike earlier viruses.
9. A *Trojan Horse* loads itself on the _____ disc of your computer.
10. It can allow people to access your computer and steal your _____ and credit card details.

1.	2.	3.	4.	5.
6.	7.	8.	9.	10.

TASK 2

READING COMPREHENSION(A: 5 x 1 = 5 points; B: 5 x 1 = 5 points)

- A.** Read the text and decide whether the sentences are true (T) or false (F).
Base your answers on the text. Write your answers in the table below.

Snow Skiing in the Great Indoors

It's summer in Japan – the perfect time to pull on a designer jacket and gloves and head off to a ski slope. You may be wondering how this is possible. Tokyo's top real estate developer has built the world's largest indoor ski facility. The SSAWS ski building opens this week in Funabashi, Chiba Prefecture, a town 30 minutes east of Tokyo by train.

The ski building is actually a \$365 million refrigerator. Inside the temperature is maintained at a chilly two degrees Celsius. The building's snow-making system is said to be unique: 94 nozzles, spread across the ceiling, spray a mix of compressed air and misty water. When the water particles are exposed to cold air, they crystalize into snow. It is a unique combination of scientific achievement and the leisure industry. It is not just any snow that is produced by the machine. These crystals are powdery and small. To get the same high-quality snow one would have to travel to the mountains of Japan's northern island of Hokkaido.

The ski building has two slopes – one for the beginners and the other, slightly steeper, for experienced skiers. Visitors to the ski-run are charged \$54 for two hours of skiing. To avoid over-crowding, only 2.000 people will be allowed at one time. Those who don't like the idea of summer snow skiing can visit Japan's massive indoor resort called Wild Blue Yokohama. It's got a sandy beach, fake palm trees and 2-metre high waves. The entrance fee is \$35.

1. The ski slope is in the center of Tokyo.
2. It takes 30 minutes to get to Funabashi from Tokyo by train.
3. The snow is transported to the ski center from Hokkaido island.
4. 2.000 people can visit the center at one time.
5. The ski center has also got a sandy beach with fake palm trees.

ANSWERS	
1.	
2.	
3.	
4.	
5.	

- B.** Fill in the missing parts in the text. There is one extra letter which you do not need to use. Write your answers in the table below.

The *Troll* offshore oil and gas drilling platform, at a total height of 472m, is the tallest construction which has ever been transported from one location to another. **1.** _____ and most complex engineering projects in history. It was built over a period of four years, using a workforce of about 2.000, and it was first deployed in 1995 to produce natural gas from the enormous Troll oil field off the coast of Norway. The total weight of the reinforced concrete structure is 656.000, which includes 100.000 t of reinforcing steel. The volume of the concrete alone (without the steel) is 245.000.

2. _____ which is 303 m deep at that point, and its legs are sunk 35 m into the seabed in order to provide sufficient stability.

The structure has four legs made of reinforced concrete. Each leg has an elevator that takes over nine minutes to travel from the platform above the waves to the seabed.

3. _____ and have walls one meter thick. Their shape is a combination of cylindrical and conical, but the diameter of each cylinder is wider at the top and bottom.

The legs were built by pouring concrete continuously, by means of a process called slip-forming, in order to give them maximum strength and make them able to withstand intense pressure. **4.** _____, the platform was fixed to the top, and then the whole structure was towed over the sea a distance of 200 km from the construction site to its final location on the Troll gas field, 80 km north-west of Bergen in Norway.

The Troll platform is connected to electricity supplies on the mainland by means of a sub-sea electrical cable.

The Troll oil and gas field is one of the largest offshore fields in the world with recoverable reserves and approximately 1.3 trillion m³ of gas. **5.** _____ up to 100 million m³ of natural gas every day.

- A. The platform is located in sea water
- B. The form is covered in white fabric
- C. The legs are hollow
- D. The structure is also one of the greatest
- E. Today, the field produces
- F. When the legs were finished

1.	2.	3.	4.	5.
----	----	----	----	----

TASK 3

GRAMMAR (5 x 1 = 5 points)

Choose the correct word **a** or **b**. Write your answers in the table below.

1. John _____ in the same company for 20 years
 - a) is working
 - b) has been working
2. The Chief Mechanic _____ the diesel generators in the factory.
 - a) repairs
 - b) repair
3. Did you _____ professor Johnson yesterday?
 - a) saw
 - b) see
4. Ben Nevis is _____ mountain in Great Britain.
 - a) the higher
 - b) the highest
5. Turn _____ at the Post Office.
 - a) left
 - b) on the left

1.	2.	3.	4.	5.
----	----	----	----	----

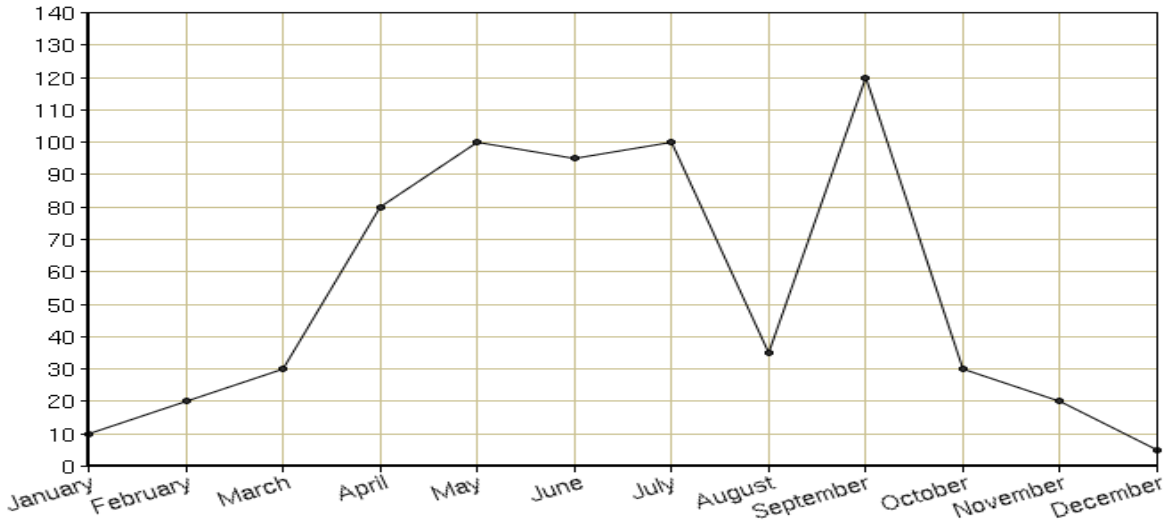
TASK 4

WRITING (A: 6 x 0.5 = 3 points; B =7 points)

A. Study the graph and complete the description with the expressions below.

Write your answers in the table below. There is one extra word which you do not need to use.

increased, decreased, rise, drop, reached a peak, stood at, fluctuated,



The graph shows the sale of bicycles in Decathlon stores in Poznań in 2011.

In January the number 1. _____ 10. From January till March there was a slight 2. _____ in sales and the number reached 30 at the beginning of March. Then the sales 3. _____ gradually and reached 100 bikes in May. Then the number 4. _____ a little bit and reached 100 again. In July the number 5. _____ rapidly and reached 35 in August. From the 1st till the 3rd September there was a 50 % discount on bikes in Decathlon stores and the sales 6. _____ of 120 bikes. From September till the end of the year there was a gradual fall of sales.

1.	2.	3.	4.	5.	6.

B. Complete this e-mail with the missing phrases. There is one extra phrase which you do not need to use. Write your answers in the table below.

Please let me know, We would like, We are looking forward, Moreover, We are interested, Unfortunately, Could you please, I attach,

TO: recepcja.karpacz@golebiewski.pl
 FROM: solaris.energy-solutions@gmail.com
 SUBJECT: conference

Dear Miss Nowak,

Our company is a leading manufacturer of solar panels in Europe.

- _____ in holding a 2-day conference on alternative sources of energy in your hotel.
- _____ we are planning to make a training on our products for our distributors and partners from Poland. We expect 80 people to come. 3. _____ to have our conference either at the end of September or at the beginning of October. 4. _____ I am not able to give you the exact dates at the moment.
- _____ send us the price list of accommodation and hiring the conference room.
- _____ if you need any further information.
- _____ to hearing from you soon.

Yours sincerely
 Thomas Martin

1.	2.	3.	4.	5.	6.	7.

TASK 5

MATHS (10 x 0.5 = 5 points)

Use the following words to make correct expressions. There are 3 words you do not need to use.

root base power semi- angle broken thirds multiplied cubic rectangular
equal diameter integral

the nth _____
 _____ centimeters

an acute _____
 _____ shape

the square _____
 _____ line

two _____
 _____ by

the circle's _____
 _____ circle

1.	2.	3.	4.	5.
6.	7.	8.	9.	10.